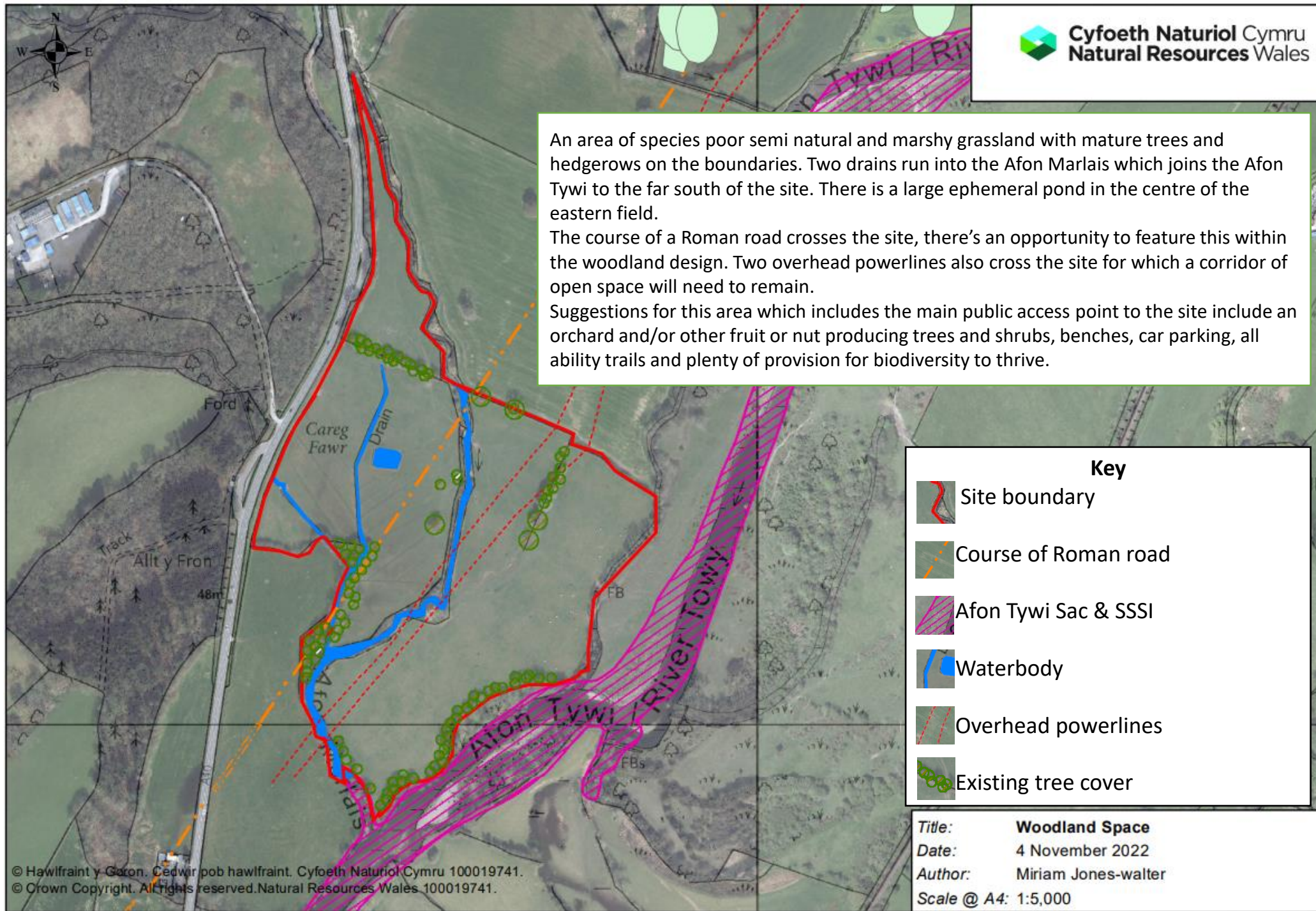








An area of species poor semi natural and marshy grassland with mature trees and hedgerows on the boundaries. Two drains run into the Afon Marlais which joins the Afon Tywi to the far south of the site. There is a large ephemeral pond in the centre of the eastern field.

The course of a Roman road crosses the site, there's an opportunity to feature this within the woodland design. Two overhead powerlines also cross the site for which a corridor of open space will need to remain.

Suggestions for this area which includes the main public access point to the site include an orchard and/or other fruit or nut producing trees and shrubs, benches, car parking, all ability trails and plenty of provision for biodiversity to thrive.



Key

-  Site boundary
-  Course of Roman road
-  Afon Tywi Sac & SSSI
-  Waterbody
-  Overhead powerlines
-  Existing tree cover

Title: **Woodland Space**
 Date: 4 November 2022
 Author: Miriam Jones-walter
 Scale @ A4: 1:5,000

The woodland planting has been designed to enhance the existing features on the site, including the pond and watercourses. This will mean substantial open space is retained to provide open and edge habitat and maintain an open feel to the landscape. Planting will consist of a wide range of broadleaf species and shrubs including oak, hornbeam, cherry, small leaved lime, wych elm, hazel, hawthorne, guelder rose, crab apple, wild service tree, walnut and black poplar. The existing field entrance at **A** will be upgraded to allow safe access to the site for visitors and operations on the site. A car park will also be created. An open corridor will be maintained at **B** along the route of the roman road, to create a linear feature. Interpretation will be placed to provide context to the history of the site. A bridge will cross the Marlais at **C** for public and operational access, with a smaller footbridge also at **D** to allow for a circular walk around the route indicated. Benches will be placed at **E** and **F**. At **E** and near the entrance fruit and nut trees will be planted to create a blossoming feature in spring, and provide fruit for visitors and the community to pick.

- Key**
-  Site boundary
 -  Woodland planting
 -  Proposed path
 -  Orchard planting
 -  Entrance and car parking

Title: Brownhill Woodland Space
Date: 7 November 2022
Author: Miriam Jones-walter
Scale @ A4: 1:5,000