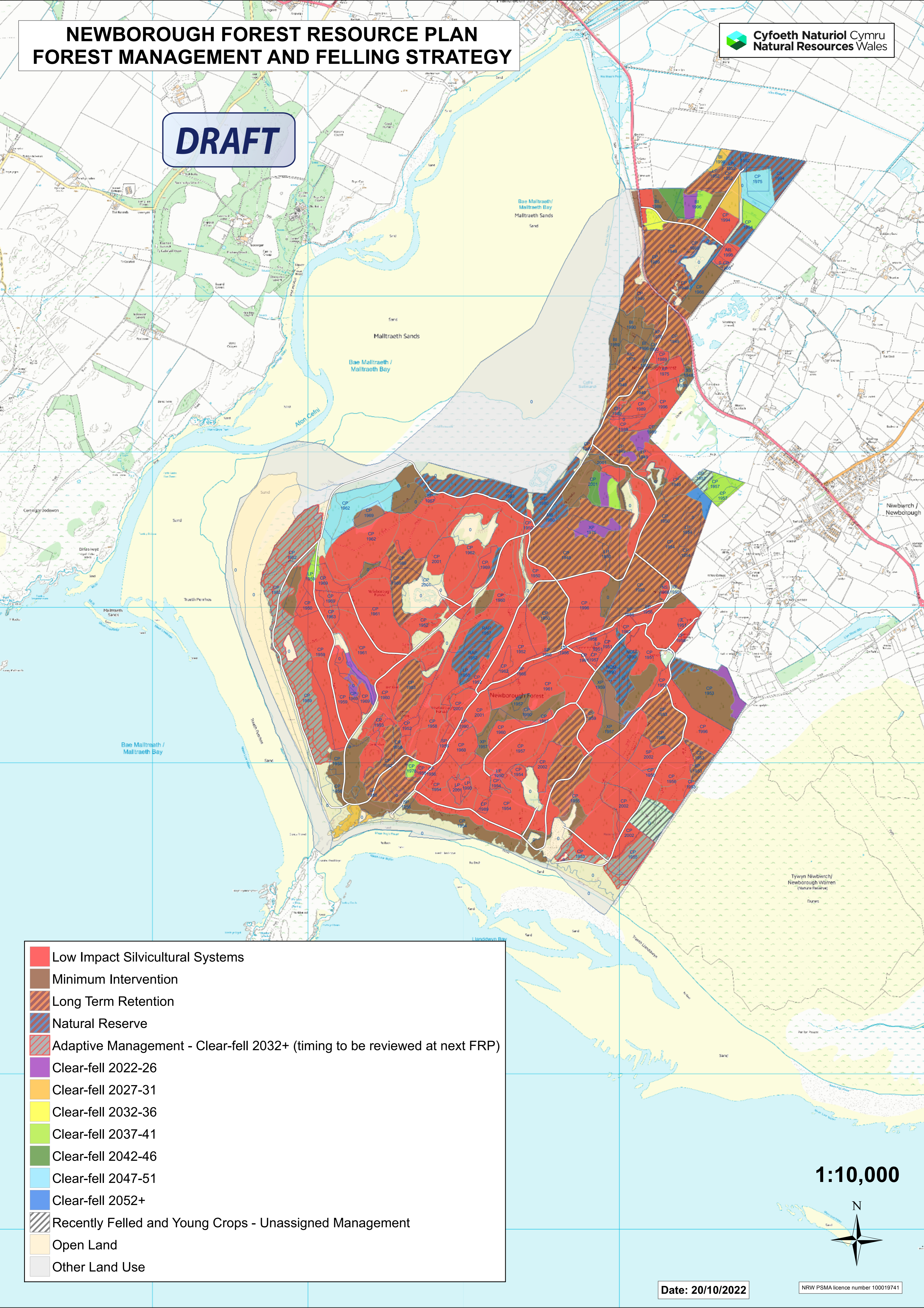


# NEWBOROUGH FOREST RESOURCE PLAN FOREST MANAGEMENT AND FELLING STRATEGY

**DRAFT**



- Low Impact Silvicultural Systems
- Minimum Intervention
- Long Term Retention
- Natural Reserve
- Adaptive Management - Clear-fell 2032+ (timing to be reviewed at next FRP)
- Clear-fell 2022-26
- Clear-fell 2027-31
- Clear-fell 2032-36
- Clear-fell 2037-41
- Clear-fell 2042-46
- Clear-fell 2047-51
- Clear-fell 2052+
- Recently Felled and Young Crops - Unassigned Management
- Open Land
- Other Land Use

1:10,000

