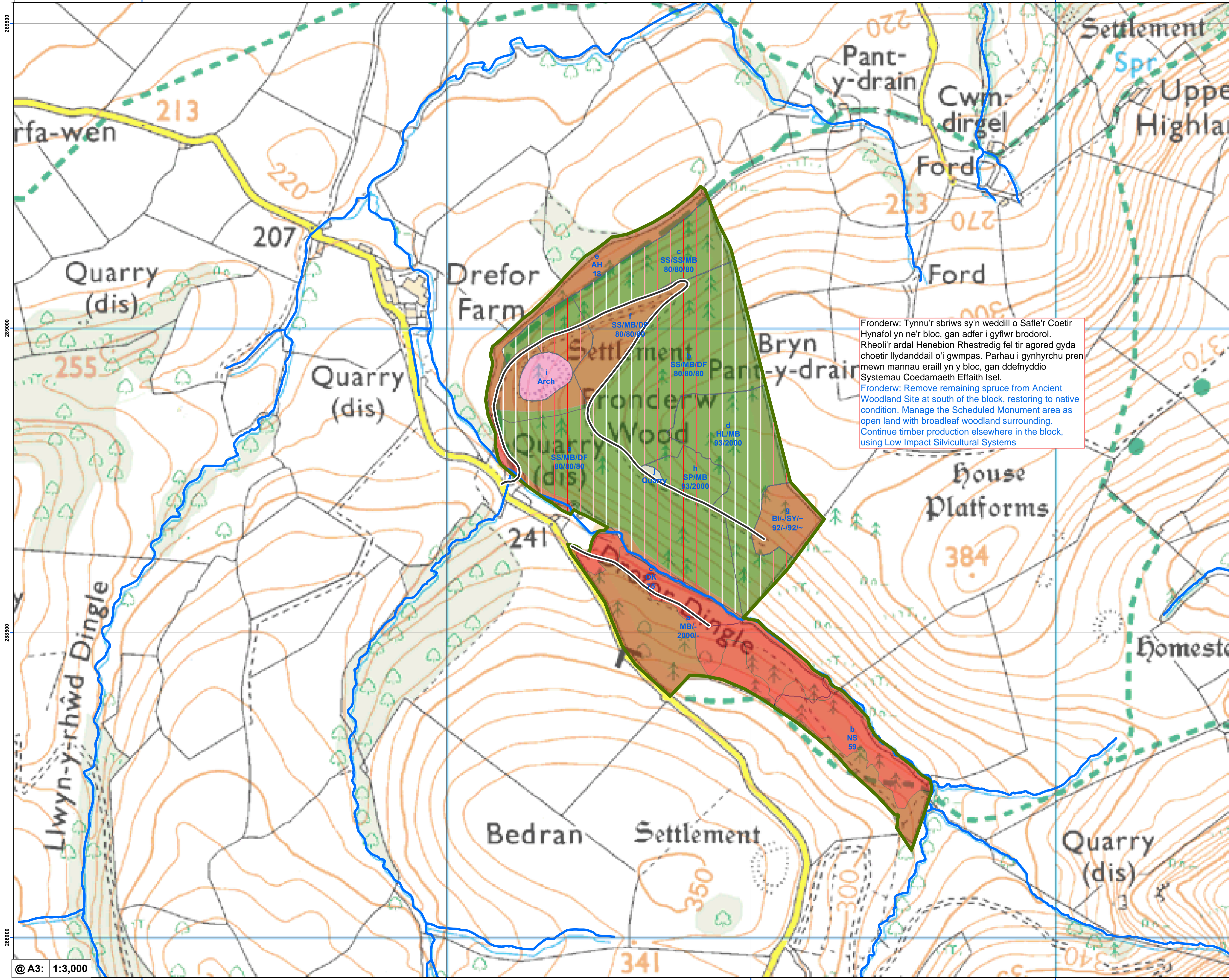


Cynllun Adnoddau Coedwig Ceri - Prif Amcanion Hirdymor (tudalen 3)

Ceri Forest Resource Plan - Long Term Objectives (page 3)



Fronderw: Tynnu'r sbrwsu sy'n weddill o Safle'r Coetir Hynafol yn ne'r bloc, gan adfer i gyflwr brodorol. Rheoli'r ardal Henebion Rhedredig fel tir agored gyda choetir llydandail o'i gwmpas. Parhau i gynhyrchu pren mewn manau eraill yn y bloc, gan ddefnyddio Systemau Coedamaeth Effaith Isel.
 Fronderw: Remove remaining spruce from Ancient Woodland Site at south of the block, restoring to native condition. Manage the Scheduled Monument area as open land with broadleaf woodland surrounding. Continue timber production elsewhere in the block, using Low Impact Silvicultural Systems

- Ffin coedwig - Forest boundary
- Afonydd a nentydd - Rivers and streams
- Prif Amcanion Hirdymor - Long Term Vision**
- Tir amaethyddol - Agriculture
- Rheoli coetir hynafol - Ancient woodland mgt
- Rheoli coetiroedd brodorol - Native woodland mgt
- Rheoli cynefin agored - Open habitat mgt
- Tir arall - Other land
- Hamdden - Recreation
- Rheoli coetir safonol - Standard forest mgt
- Coetiroedd olynol - Successional woodland
- Systemau coedamaeth bach eu heffaith (Hirdymor) - Low Impact Silvicultural Systems (long-term)
- Is-adrannau coedwig - Forest subcompartments
- Ffordd y goedwig - Forest roads

Mae map yr Amcanion Hirdymor yn dangos sut yr hoffem i'r goedwig edrych, ymhen 25-100 mlynedd. Mae ein gweithrediadau rheoli a choedwigaeth yn anelu at gyflawni hyn. Rydym yn gweithio gyda natur, weithiau mae angen ymateb i amgylchiadau sy'n newid (er enghraifft, difrod stormydd a chlefydau coed). Bwriad y nodiadau ar y map hwn yw rhoi trosolwg o gyfeiriad rheoli mewn rhannau penodol o'r goedwig. Cofiwch nad yw'n bosibl dangos popeth ar fap ar y raddfa hon. Am ragor o wybodaeth, cyfeiriwch at y datganiad o Amcanion ar gyfer Cynllun Adnoddau Coedwig Ceri, sydd wedi'i gyhoeddi ar dudalen we Gofod Dinasyddion.
 The Long Term Objectives map shows how we would like the forest to look, 25-100 years from now. Our management and forestry operations set out to achieve this. We are working with nature, sometimes it is necessary to respond to changing circumstances (for example, storm damage and tree diseases). The notes on this map are intended to give an overview of the direction of management in particular parts of the forest. Please keep in mind that it is not possible to show everything on a map at this scale. For more information please refer to the statement of Objectives for the Ceri Forest Resource Plan, which is published on the Citizen Space webpage.

