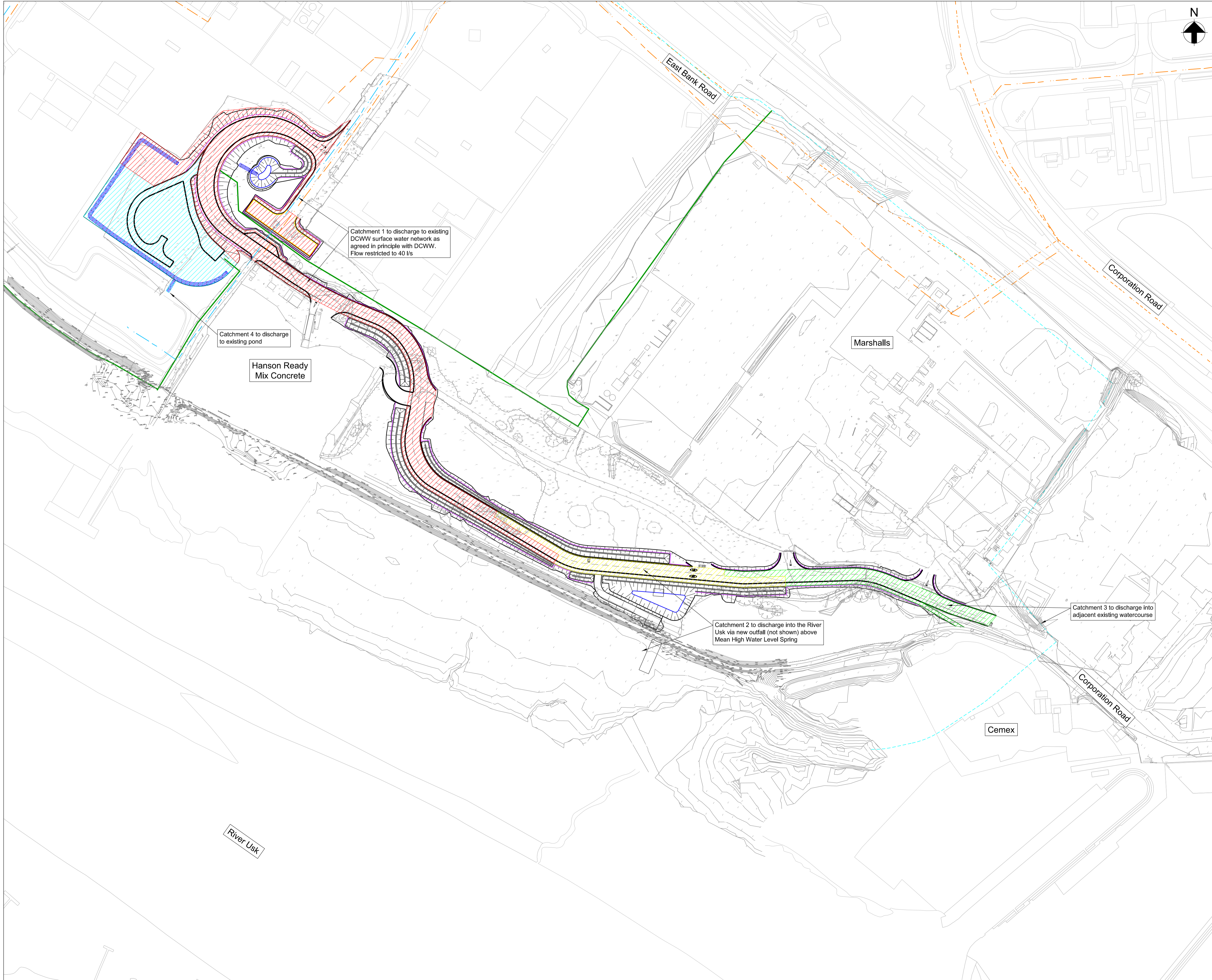




- Legend**
- Existing Storm Drainage
 - Existing Foul Drainage
 - Existing Watercourse
 - Proposed Storm Drainage Catchment 1
 - Proposed Storm Drainage Catchment 2
 - Proposed Storm Drainage Catchment 3
 - Proposed Storm Drainage Catchment 4

- Notes**
1. Do not scale from this drawing
 2. All dimensions are in metres unless noted otherwise.
 3. The details shown on this drawing are based on a RIBA Stage 4 design for approval produced for a detailed planning application. The highway design shown is for adoption by Newport City Council and subject to design approval. The details will need to be reviewed and revised during subsequent design stages.
 4. The positions of the existing services on this drawing have been traced from paper records received from the statutory authorities. Actual positions may vary from shown.
 5. Storm drainage catchments have been defined using the proposed highway levels.



Catchment 1 to discharge to existing DCWW surface water network as agreed in principle with DCWW. Flow restricted to 40 l/s

Catchment 4 to discharge to existing pond

Hanson Ready Mix Concrete

Catchment 2 to discharge into the River Usk via new outfall (not shown) above Mean High Water Level Spring

Catchment 3 to discharge into adjacent existing watercourse

P03	REVISED FOR PLANNING RESUBMISSION	CB	CL	DL	25 / 06 / 21
P02	ISSUED FOR TENDER	CB	CL	DL	11 / 05 / 21
P01	ISSUED FOR PLANNING	CB	SW	SW	24 / 02 / 21
Rev.	Description	Drawn	Chkd.	Appd.	Issue Date



ARUP

Project Name: STEPHENSON STREET FLOOD DEFENCE SCHEME

Drawing Title: EAST BANK ROAD PROPOSED DRAINAGE CATCHMENTS

Subsidiary Code: D2 - FOR TENDER	Subsidiary Code: D2
----------------------------------	---------------------

Internal Project Number: 274580	Scale: 1:1000	Rev: P03
---------------------------------	---------------	----------

Drawing Number: 274580-ARP-XX-DR-CX-1152